

DISTRICT COURT - CSRBA
Fifth Judicial District
County of Twin Falls - State of Idaho

JUN 10 2022

By _____ Clerk
 _____ Deputy Clerk

IN THE DISTRICT COURT OF THE FIFTH JUDICIAL DISTRICT OF THE
 STATE OF IDAHO, IN AND FOR THE COUNTY OF TWIN FALLS

In Re CSRBA) PARTIAL DECREE PURSUANT TO I.R.C.P. 54 (b)
 Case No. 49576) FOR FEDERAL RESERVED
 _____) WATER RIGHT NO. 92-11078H

NAME AND ADDRESS: UNITED STATES OF AMERICA ACTING THROUGH
 USDA FOREST SERVICE
 550 W FORT ST MSC 033
 BOISE ID 83724

SOURCE: See Attachment 1, Column A TRIBUTARY: See Attachment 1, Column B

Sources are located on National Forest System Land in the Middle Fork-St Maries River subwatershed (HUC12 170103040701).

QUANTITY: The amount of water necessary to control and suppress forest fires.

PRIORITY DATE: 12/02/1992

POINT OF DIVERSION: See Attachment 1, Columns C through G

PURPOSE AND PERIOD OF USE:

<u>PURPOSE OF USE</u>	<u>PERIOD OF USE</u>
Administrative-Fire Suppression	01/01 - 12/31

PLACE OF USE: National Forests in Idaho and the Kaniksu, Lolo and Kootenai National Forests in Montana.

See Attachment 2.

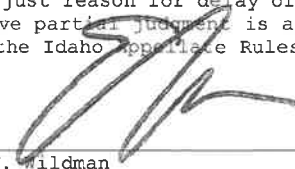
OTHER PROVISIONS NECESSARY FOR DEFINITION OR ADMINISTRATION OF THIS WATER RIGHT:

This right is limited to the intermittent diversion and use of water for the purpose of suppressing wildfires. This water right shall not be used as a basis to prevent the future appropriation of water.

This partial decree is subject to such general provisions necessary for the definition of the rights or for the efficient administration of the water rights as may be ultimately determined by the Court at a point in time no later than the entry of a final unified decree. Idaho Code § 42-1412(6).

RULE 54(b) CERTIFICATE

With respect to the issues determined by the above partial judgment it is hereby CERTIFIED, in accordance with Rule 54(b), I.R.C.P., that the court has determined that there is no just reason for delay of the entry of a final judgment and that the court has and does hereby direct that the above partial judgment is a final judgment upon which execution may issue and an appeal may be taken as provided by the Idaho Appellate Rules.








 Eric J. Wildman
 Presiding Judge of the
 Coeur d'Alene-Spokane River Adjudication

Attachment 1

	A	B	C	D	E	F	G
1	SOURCE NAME	TO TRIBUTARY	TOWNSHIP	RANGE	SECTION	QQ	SURVEY CODE AND NUMBER
2	Unnamed Stream	Gramp Creek	43N	03E	19	NESE	
3	Gramp Creek	Gold Center Creek	43N	03E	19	SESE	
4	Unnamed Stream	Gramp Creek	43N	03E	19	SESE	
5	Gramp Creek	Gold Center Creek	43N	03E	20		
6	Unnamed Stream	Gramp Creek	43N	03E	20		
7	Unnamed Stream	Placer Creek	43N	03E	21		
8	Placer Creek	Gold Center Creek	43N	03E	27		
9	Unnamed Stream	Gold Center Creek	43N	03E	27		
10	Unnamed Stream	Gold Center Creek	43N	03E	27		
11	Unnamed Stream	Placer Creek	43N	03E	28	NENW	
12	Unnamed Stream	Placer Creek	43N	03E	28	NENW	
13	Placer Creek	Gold Center Creek	43N	03E	28	NESE	
14	Unnamed Stream	Placer Creek	43N	03E	28	NWNE	
15	Placer Creek	Gold Center Creek	43N	03E	28	NWSE	
16	Placer Creek	Gold Center Creek	43N	03E	28	SESW	
17	Placer Creek	Gold Center Creek	43N	03E	28	SWSE	
18	Placer Creek	Gold Center Creek	43N	03E	28	SWSW	
19	Unnamed Stream	Placer Creek	43N	03E	28	SWSW	
20	Placer Creek	Gold Center Creek	43N	03E	29	SESE	
21	Unnamed Stream	Placer Creek	43N	03E	29	SESW	
22	Unnamed Stream	Placer Creek	43N	03E	29	SWSE	
23	Unnamed Stream	Gramp Creek	43N	03E	30	SESE	
24	Unnamed Stream	Gramp Creek	43N	03E	30	SWSE	
25	Unnamed Stream	Gold Center Creek	43N	03E	31	NESE	
26	Unnamed Stream	Gramp Creek	43N	03E	31	NWNE	
27	Unnamed Stream	Gold Center Creek	43N	03E	31	SENE	
28	Unnamed Stream	Gold Center Creek	43N	03E	31	SESE	
29	Unnamed Stream	Gramp Creek	43N	03E	31	SESW	
30	Unnamed Stream	Gramp Creek	43N	03E	31	SWNE	
31	Unnamed Stream	Placer Creek	43N	03E	32	NENW	
32	Placer Creek	Gold Center Creek	43N	03E	32	NESW	
33	Placer Creek	Gold Center Creek	43N	03E	32	NWNE	
34	Unnamed Stream	Placer Creek	43N	03E	32	NWNE	
35	Unnamed Stream	Placer Creek	43N	03E	32	NWNE	
36	Unnamed Stream	Gold Center Creek	43N	03E	32	NWNW	
37	Unnamed Stream	Gold Center Creek	43N	03E	32	NWSW	
38	Placer Creek	Gold Center Creek	43N	03E	32	SESW	
39	Placer Creek	Gold Center Creek	43N	03E	32	SWNE	
40	Unnamed Stream	Placer Creek	43N	03E	32	SWNE	
41	Unnamed Stream	Gold Center Creek	43N	03E	32	SWNW	
42	Placer Creek	Gold Center Creek	43N	03E	32	SWSW	
43	Unnamed Stream	Gold Center Creek	43N	03E	33	NENE	
44	Unnamed Stream	Gold Center Creek	43N	03E	33	NWSE	
45	Gold Center Creek	Middle Fork Saint Maries River	43N	03E	33	SESW	
46	Unnamed Stream	Gold Center Creek	43N	03E	33	SESW	
47	Unnamed Stream	Gold Center Creek	43N	03E	33	SESW	
48	Unnamed Stream	Gold Center Creek	43N	03E	33	SESW	
49	Unnamed Stream	Gold Center Creek	43N	03E	33	SWNE	
50	Gold Center Creek	Middle Fork Saint Maries River	43N	03E	33	SWSE	
51	Unnamed Stream	Gold Center Creek	43N	03E	33	SWSE	
52	Unnamed Stream	Gold Center Creek	43N	03E	34	NENW	
53	Unnamed Stream	Gold Center Creek	43N	03E	34	NWNW	
54	Unnamed Stream	Gold Center Creek	43N	03E	34	SENW	
55	Unnamed Spring	Placer Creek	43N	03E	27	SENW	

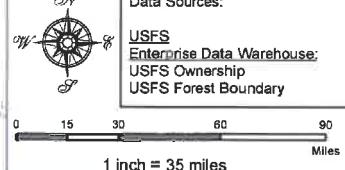
Attachment 2
 Place of Use Map Fire Suppression - Water Right No. 92-11078H
 National Forests in Idaho and the Kaniksu, Lolo and Kootenai NF in Montana

Key to Features

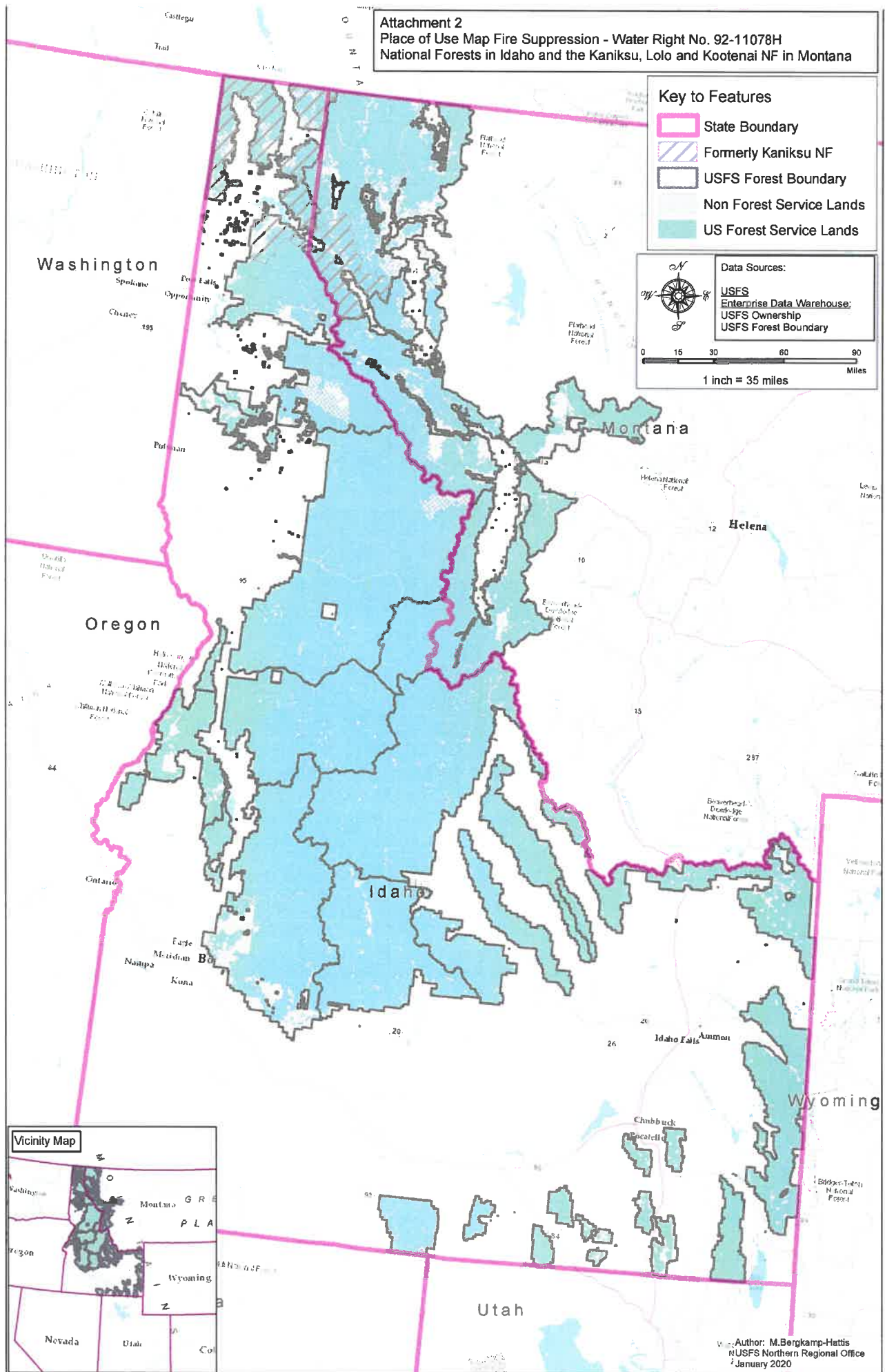
-  State Boundary
-  Formerly Kaniksu NF
-  USFS Forest Boundary
-  Non Forest Service Lands
-  US Forest Service Lands

Data Sources:

- USFS
- Enterprise Data Warehouse
- USFS Ownership
- USFS Forest Boundary



0 15 30 60 90 Miles
 1 inch = 35 miles



Author: M. Bergkamp-Harris
 RUSFS Northern Regional Office
 January 2020